

**LEGEND**

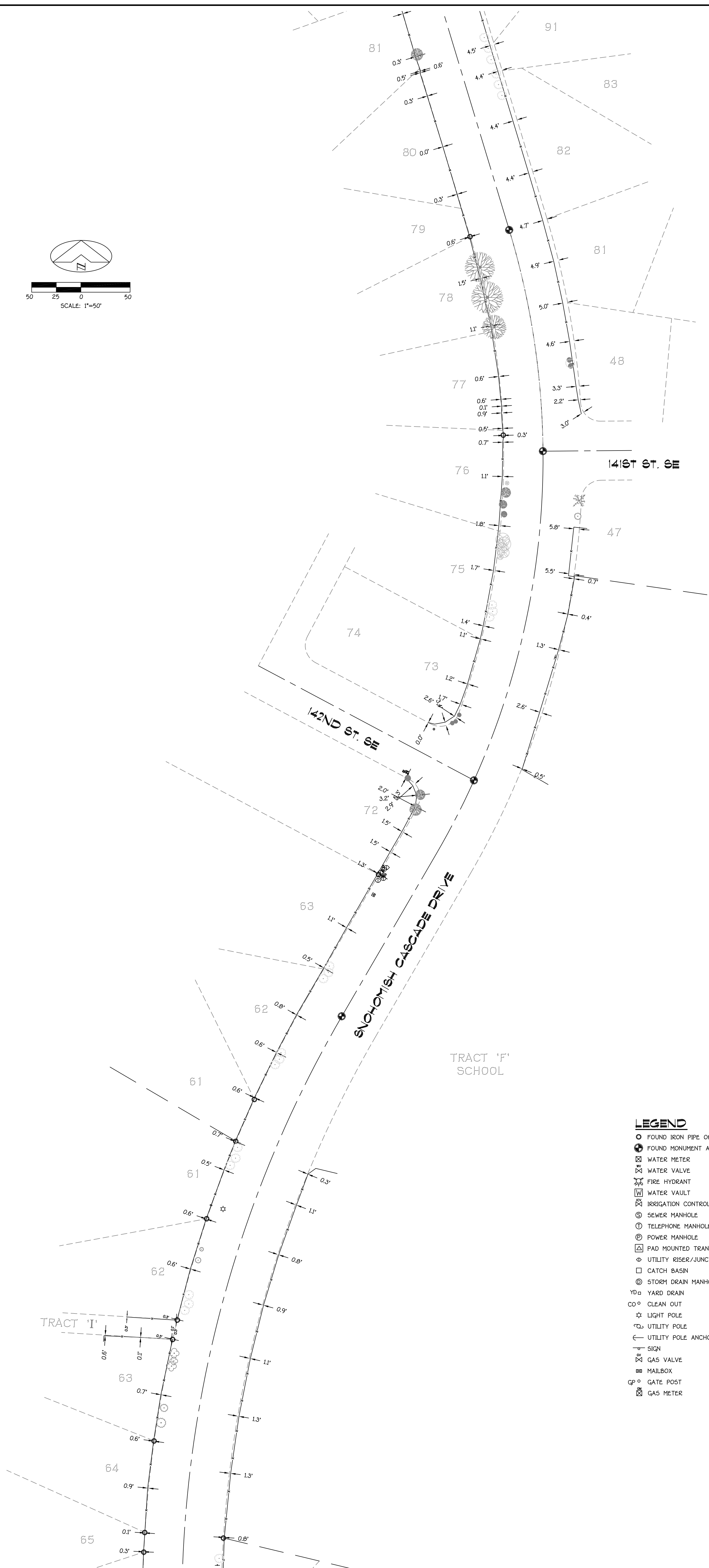
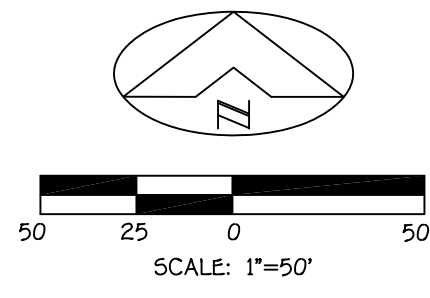
- FOUND IRON PIPE OR BAR AND CAP (RBC) AS NOTED
  - ⊕ FOUND MONUMENT AS NOTED
  - ⊗ WATER METER
  - ⊕ WATER VALVE
  - ⊗ FIRE HYDRANT
  - ⊕ WATER VAULT
  - ⊗ IRRIGATION CONTROL VALVE
  - ⊕ SEWER MANHOLE
  - ⊗ TELEPHONE MANHOLE
  - ⊕ POWER MANHOLE
  - ⊗ PAD MOUNTED TRANSFORMER
  - ⊕ UTILITY RISER/JUNCTION BOX
  - ⊗ CATCH BASIN
  - ⊕ STORM DRAIN MANHOLE
  - ⊗ YARD DRAIN
  - CO ° CLEAN OUT
  - ☆ LIGHT POLE
  - ⊕ UTILITY POLE
  - ⊗ UTILITY POLE ANCHOR
  - ⊕ SIGN
  - ⊗ GAS VALVE
  - ⊕ MAILBOX
  - ⊗ GATE POST
  - ⊕ GAS METER
- 
- FENCE LINE
  - GAS LINE
  - SEWER LINE
  - WATER LINE
  - STORM DRAIN LINE
  - POWER - OVERHEAD
- 
- ⊗ ALDER
  - ⊗ BIRCH
  - ⊗ CEDAR
  - ⊗ DECIDUOUS-UNKNOWN
  - ⊗ FIR
  - ⊗ FRUIT
  - ⊗ HEMLOCK
  - ⊗ PINE
  - ⊗ VINE MAPLE

**EXISTING FENCE SURVEY**  
 FOR  
**SNOHOMISH CASCADE HOMEOWNERS ASSOCIATION**  
 NW 1/4 & SE 1/4 OF SECTION 34, TOWNSHIP 20 NORTH, RANGE 05 EAST, W.M.  
 SNOHOMISH COUNTY, WASHINGTON



DRAWN BY:	GJK, ME, HCP
DATE:	JUNE 24, 2014
PROJECT NO.	214080
SHEET NO.	1 OF 3

W:\J\2014\214080-SNOHOMISH CASCADE HOMEOWNERS ASSOCIATION\214080.dwg, Layout: 6/24/2014 10:01:59 AM, 10/10/14



**LEGEND**

- |    |   |   |                   |
|----|---|---|-------------------|
| ○  | FOUND IRON PIPE OR BAR AND CAP (R&C) AS NOTED | — | FENCE LINE        |
| ⊕  | FOUND MONUMENT AS NOTED                       | — | GAS LINE          |
| ⊗  | WATER METER                                   | — | SEWER LINE        |
| ⊕  | WATER VALVE                                   | — | WATER LINE        |
| ⊗  | FIRE HYDRANT                                  | — | STORM DRAIN LINE  |
| ⊗  | WATER VAULT                                   | — | POWER - OVERHEAD  |
| ⊗  | IRRIGATION CONTROL VALVE                      | ⊗ | ALDER             |
| ⊗  | SEWER MANHOLE                                 | ⊗ | BIRCH             |
| ⊗  | TELEPHONE MANHOLE                             | ⊗ | CEDAR             |
| ⊗  | POWER MANHOLE                                 | ⊗ | DECIDUOUS-UNKNOWN |
| ⊗  | PAD MOUNTED TRANSFORMER                       | ⊗ | FIR               |
| ⊗  | UTILITY RISER/JUNCTION BOX                    | ⊗ | FRUIT             |
| ⊗  | CATCH BASIN                                   | ⊗ | HEMLOCK           |
| ⊗  | STORM DRAIN MANHOLE                           | ⊗ | PINE              |
| YD | YARD DRAIN                                    | ⊗ | VINE MAPLE        |
| CO | CLEAN OUT                                     |   |                   |
| ⊗  | LIGHT POLE                                    |   |                   |
| ⊗  | UTILITY POLE                                  |   |                   |
| ⊗  | UTILITY POLE ANCHOR                           |   |                   |
| ⊗  | SIGN  |   |                   |
| ⊗  | GAS VALVE                                     |   |                   |
| ⊗  | MAILBOX                                       |   |                   |
| GP | GATE POST                                     |   |                   |
| ⊗  | GAS METER                                     |   |                   |

**EXISTING FENCE SURVEY**  
 FOR  
**SNOHOMISH CASCADE HOMEOWNERS ASSOCIATION**  
 NW 1/4 & SE 1/4 OF SECTION 34, TOWNSHIP 20 NORTH, RANGE 05 EAST, W.M.  
 SNOHOMISH COUNTY, WASHINGTON

**A.S.P.I.**  
**LAND SURVEYING**  
**AND**  
**PLANNING**  
 4532-B EVERGREEN WAY  
 EVERETT, WA 98203  
 (425) 252-1884

DRAWN BY:  
 GJK, ME, HCP  
 DATE:  
 JUNE 24, 2014  
 PROJECT NO.  
 214080  
 SHEET NO.  
 2 OF 3

W:\JARED\2014\214080-SNOHOMISH CASCADE HOMEOWNERS ASSOCIATION\214080.dwg, Layer: 05, 6/24/2014, 10:02:53 AM, 11/07/2014, 10:11

