

THE FALLS AT SNOHOMISH CASCADE

November 2014 Monthly Update

Financial Update:

SCHOA Accounts at Heritage Bank—These numbers have changed since the last Board Meeting.

Number of Homeowners Dues Collected
YTD: 304

Operating Budget Balance: \$24,130.67

Reserve Allocation Total: \$71,034.81



Final Board Meeting for 2014
**Dec. 17th, 7:00 pm in the Totem Falls
Library**

The board will be voting on the 2015 Operating and Reserve Budgets. Please join us for the meeting.

Common area fence construction

began on Nov. 21, 2014. Ramiro and the crew of Nice View Fence Company braved the elements and began tearing down the old fence at the corner of 138th Pl. SE and Snohomish Cascade Dr. SE. The first posts were set on Saturday, Nov. 22nd. Construction will begin this week.

Snohomish County Traffic Operations

The Board would like to see a more visible crosswalk in front of Totem Falls Elementary.

Possibly one with flashing lights when someone is using it. If you would like to email this request as a concerned citizen, please send it to:

Contact:

Greg Nixon, Snohomish County Traffic Investigator

email:

greg.nixon@co.snohomish.wa.us

Phone: 425.388-7137

(Please direct all citizen questions and concerns to Greg Nixon.)

Other important contact:

Sheriff's South Precinct Office 425-388-3393

Please use this number to request assistance from the officer in charge of your neighborhood area.

Sheriff's Traffic Complaint Form

<http://snohomishcountywa.gov/formcenter/sheriff-4/traffic-complaint-form-116>



**Recent questions asked of
Snohomish County Traffic
Operations Staff on Behalf of
SCHOA:**

Can Dynamic Radar Speed Limit signs be installed?

This is currently under review by the county, but is at least two years out. Due to lack of policy regarding installation of these signs, permitting issues, and a cost of about \$10,000.00 each, this option is very prohibitive.

Can speed bumps or raised crosswalks be installed in front of Totem Falls Elementary?

No. Sno-Cascade Dr. is an arterial and nothing raised can be installed.

Will there be a traffic signal installed at the corner of Sno-Cascade and Puget Park Drive?

No. This intersection will remain a four way stop. The county has no plan to install any traffic signals at this intersection.

The portable radar box temporarily located at the south end of our development will be moved by the county to the north end of The Falls next week. It will face north toward the traffic coming into the development and up the hill toward the elementary school. It will show drivers the speed they are traveling with hopes that those who are speeding will slow down!

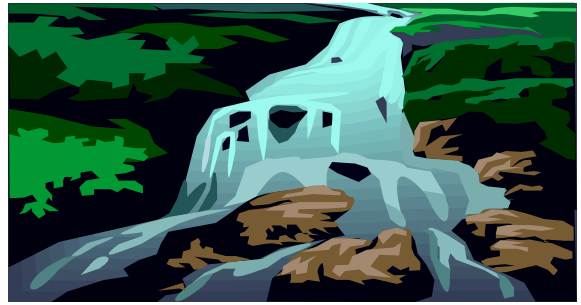


The fall colors are so pretty.....
but the leaves clog drains and can cause flooding.

Thank you for clearing all the leaves near your home! Also, if you have a street drain near your home and are willing, please clear it when you see leaves accumulating.

Waterfall Update:

The waterfall is currently turned off. It will be winterized over the next month.



How to Contact the Board:

Email: boardforSCHOA@gmail.com

Mail: SCHOA, PO Box 15030,
Mill Creek WA 98082

Check out our website at:
www.thefalls-schoa.com



Have a wonderful Thanksgiving holiday with your family and friends!

Sincerely,

SCHOA Board

Denae, Michelle, and Shelley